



SK STEEL SKIRTED BODY

Premium features on the SK model include a best-in-class tubular headache rack, lifetime warranty LED lighting, top-rated B&W hitches, and integrated toolboxes. If you want to maximize your towing capacity while looking the part, look no further than our best-in-class 24K lb. B&W receiver hitch and our 30K lb. GN hitch. If you are just hauling cargo on our deck, our structural runners and industry-leading treadplate decks are designed to handle the heavy loads.

FEATURES AND OPTIONS

LENGTHS	84", 8'6", 9'4", 11'4"
HEADACHE RACK	Steel Tube
DECK	1/8" Treadplate
FRAME RAILS	4" Structural Channel Steel
TAIL SHELF	3" Roll-Formed 3/16" Channel Crossmembers
BP HITCH	24K lb. 2 1/2" B&W Hitch with Receiver Tube
GN HITCH	30K lb. B&W Hitch with Welded Ball
SIDE RAILS	3/8" x 2" Side Rails with Stake Pockets
FUEL FILL	Angled
12V TRAILER PLUG	Round 7 Pin in GN Box, Round 7 Pin/4 Way Flat on Rear
REAR LIGHTING	Clear LED Oval
LIGHT BOX (REAR SKIRT)	Steel
MARKER LIGHTING	Bullet DOT Approved LED
TOOLBOX	(4) Standard Integrated
FENDERS	Steel Radius
SIDESTEPS	In Front of and Behind Fender
TIE DOWNS	N/A

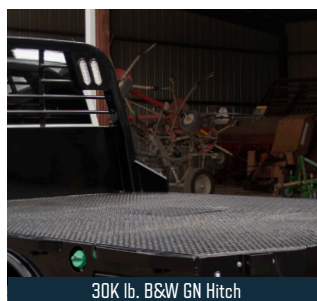
NOTABLE OPTIONS INCLUDE: 3/16" Heavy-Duty Deck, Steel SK Deluxe can have Flush Mount 30K lb. Turnover Ball; Color Primer Only (SK Model); Dovetail Deck; Drop-In or Fold-Down Side Rails; Gooseneck Trough; Rear Rubrail; Stainless Fenders (SK Model); Wood, Rubber or Blackwood Flooring



(4) Standard Integrated Toolboxes



24K lb. 2 1/2" B&W Receiver Hitch



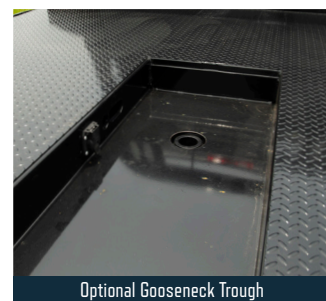
30K lb. B&W GN Hitch



Solid One Piece Steel Tube Headache Rack



Lifetime Warranty LED Lights



Optional Gooseneck Trough